

Graphic Rollovers

Rollovers can be a great addition to your website graphics because they communicate more information to users. They can help users locate navigation and can also communicate additional information in the rollover graphic itself. Two simple types of rollovers we've already seen are text links (which change color as you rollover them) and the CSS box rollovers we created in the section on CSS. However, full control over fonts and images can only be accomplished through graphic rollovers. These have to be created in an image editing program (i.e. Fireworks).

Graphic rollovers in Dreamweaver are a combination of XHTML and Javascript. The javascript allows you to manipulate what is displayed in users' browsers in ways that are not possible with just HTML. Fortunately Dreamweaver (or Fireworks) will write all of the javascript code, so you don't need to worry about it.




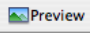
There are a couple of basics about rollovers that we need to keep in mind:

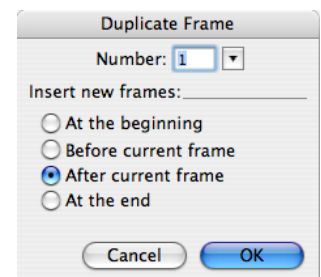
1. Rollovers require at least two graphic images. The one that is originally displayed when you view the page (called the **off state**), and one to change to when your mouse rolls-over (the **on state**). It is possible to do additional states as well.
2. Each rollover has to use graphics of the same size (i.e. if the graphic for the off state is 100px by 50px, then the graphic for the on state would also have to be 100px by 50px).

Simple Rollover

To create a simple rollover click on a slice in Fireworks, right-click and select **Add Simple Rollover Behavior...** from the popup menu (you can also use the **Behaviors Panel**, click on the + button and select **Simple Rollover** from that popup menu). That creates the behind-the-scenes code needed for the rollover. But there is some additional setup we need to do with our artwork first.

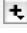

When you are viewing a simple rollover in a browser, there is javascript code in the background telling the browser to simply swap one image for another when your mouse rolls over it. Now we just need to setup the second image in Fireworks so that it has something to swap to. Lets go back to our RiskPro sample file (*RiskPro-Homepage.png*) to do this. This file has all of the slices we created in our last class and has the placeholder text hidden, so it is ready to export to HTML. First lets add our additional art for the graphical text nav rollovers:

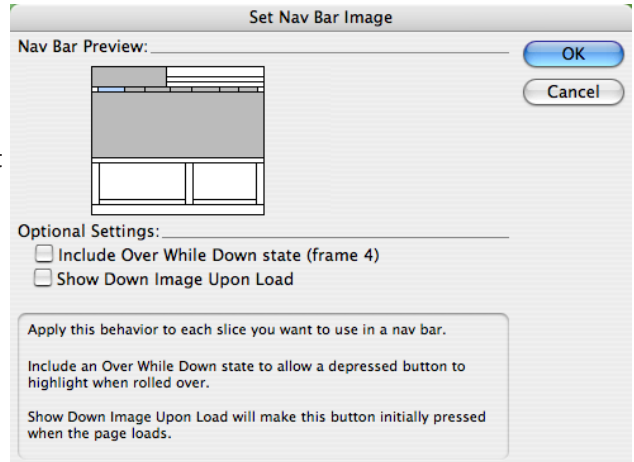
- Locate the **Frames Panel** (next to the Layers Panel) and note that there currently is just one frame (*Frame 1*). We are going to create a second frame which will contain the **on state** artwork displayed when our mouse rolls over. Since the artwork stays essentially the same (we're just going to change a color) the easiest way to replicate the artwork is to select Frame 1 and then select **Duplicate Frame...** from the drop-down menu (locate this icon  at the top of the panel and click on it).
- This brings up the **Duplicate Frame** dialog. Set it to **1 frame After the Current Frame** and click **OK**. You now have a second frame named *Frame 2*.
- Lets rename *Frame 1* to *Base Art* and *Frame 2* to *Rollover Art* (just for clarity)
- We can now make changes to the artwork in the Rollover Art frame to reflect what we want our users to see when they rollover the navigation. In this case lets just change the text color of all top navigation to *yellow* (*#FFFF00*) (hide the slices first if they're in the way;  button).
- Switch back to the Base Art frame and display your slices again (click on the Show Slices button ). Now we just click on each navigation slice and add the simple rollover behavior to each (right-click and select **Add Simple Rollover Behavior...** from menu).
- You can preview your rollovers by clicking on the  button at the top of the window
- This file is now ready to export to HTML. Use the same settings from the last time we exported and save all of your files to the **WEBSITE ROOT FOLDER** folder within your **Working RiskPro Job** folder on your **Desktop**
- Now go look in your **images** folder and you'll notice some files whose names end with **_f2**. These are the **on state** images that will display when you rollover (i.e. *lawfirms_f2.gif* is the on state image associated with *lawfirms.gif*)
- If you preview your new HTML file in a browser you can see that you now have working rollovers for your graphical navigation



Complex Rollover

Now we've seen how to create simple rollovers, often used for navigation rollovers, but sometimes we want more interaction than just a mouseover state. Lets create a third state for when someone clicks on a navigation button. Close the file *RiskPro-Homepage.png* and open *RiskPro-Homepage2.png*

- First we need another frame (remember, one frame for each state). So go to the **Frames Panel**, click on the Rollover Art frame and make a duplicate after the current frame. Lets name this Down Art.
- Now lets add an effect to the yellow navigation type by selecting each (or all at once) and adding a filter in the **Properties Inspector**. Click on the  button and select **Blur > Gaussian Blur...** and in the resulting dialog box set the **Blur Radius** to 1.
- Switch back to the Base Art frame and show your slices again
- Select one of your navigation slices, right-click on the slice and select **Add Nav Bar...** from the menu (or click on the  button in the **Behaviors Panel** and select it there)
- This opens the **Set Nav Bar Image** dialog. Leave the two options unchecked (they don't make sense here) and click **OK**
- We now have a three-state rollover image

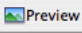


Now, if we want, we can take this a step further and have a rollover change not only the image your mouse is over, but also change another image on the page. To look at this, close your current Fireworks file and open *RiskPro-Homepage3.png*. We're now back to a file with two frames (for our off and on states), but if you look at the Rollover Art frame you'll notice that I've added another piece of text under the minor nav bar. I want this to be descriptive text that changes as I move my mouse over each navigation selection. To do this we're going to need a frame for each selection in the nav bar (since each will have its own description). I have the first description (for Social Services) done, so the easiest thing to do is to duplicate the Rollover Art frame and make six copies (one for each of the additional nav selections).

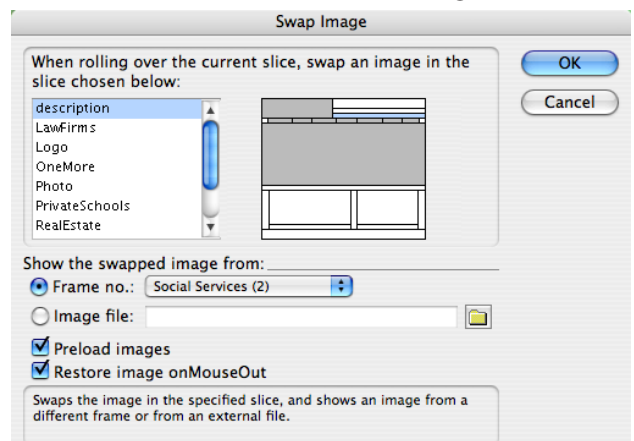
- Click on Rollover Art in the **Frames Panel** and select **Duplicate Frame...** from the dropdown menu
- In the resulting dialog box set the **Number** to 6 to be inserted *After Current Frame*
- We should now rename our frames to match our navigation selections (Social Services, Tech Firms, etc., in order)
- Now click on Tech Firms and update the descriptive text (repeat for each frame until the end)
- We can now click back to the Base Art frame and display our slices again
- Click on the Social Services slice and we need to add two behaviors now. One for the simple rollover and one for the complex one. So right-click and select **Add Simple Rollover Behavior** (that takes care of the simple rollover, displaying yellow text when we mouse over). Now right-click on the slice again and select **Add Swap Image Behavior...**
- In the resulting **Swap Image** dialog box we select the slice that we want swapped. You can try to click on it in the tiny window, but it's easier to select **description** from the list (I named it when I created it) and then select the frame that we want the image displayed from in the **Frame no.** popup list. In this case we want *Social Services* because we're setting rollover selections for the Social Services navigation button.

- Lets leave **Preload images** and **Restore image on MouseOut** checked. These will load the images into memory when the user first displays the page (so there's not a delay in displaying the rollover image) and switch back to the off state image when you move your mouse off of the button. Click **OK**

- Now repeat this process for each rollover button (Tech Firms through One More)


- Once you've completed them you can click on the  button and see how the rollovers work

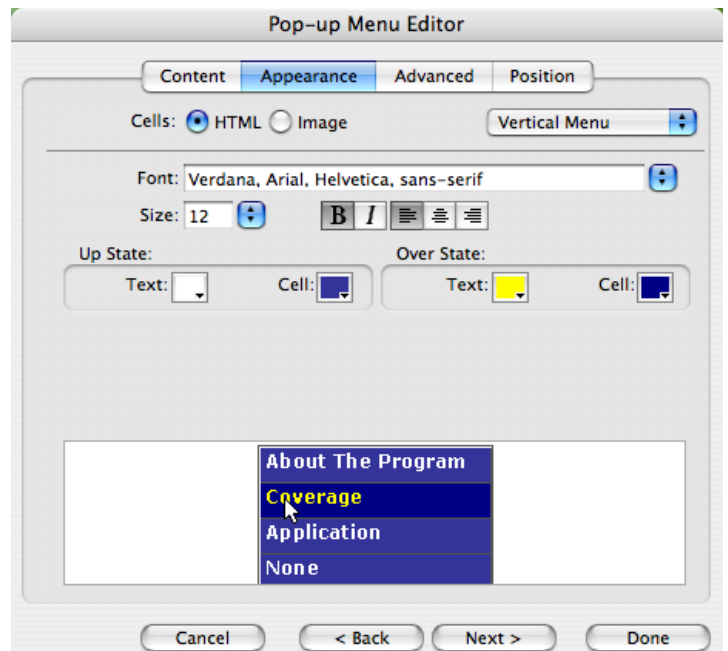
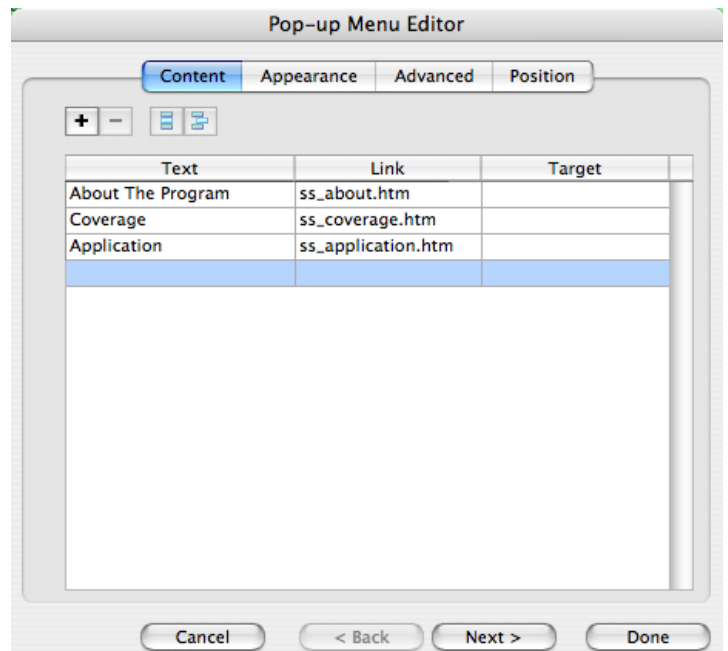
- Our file is now ready to export to HTML



CSS PopUp Menus

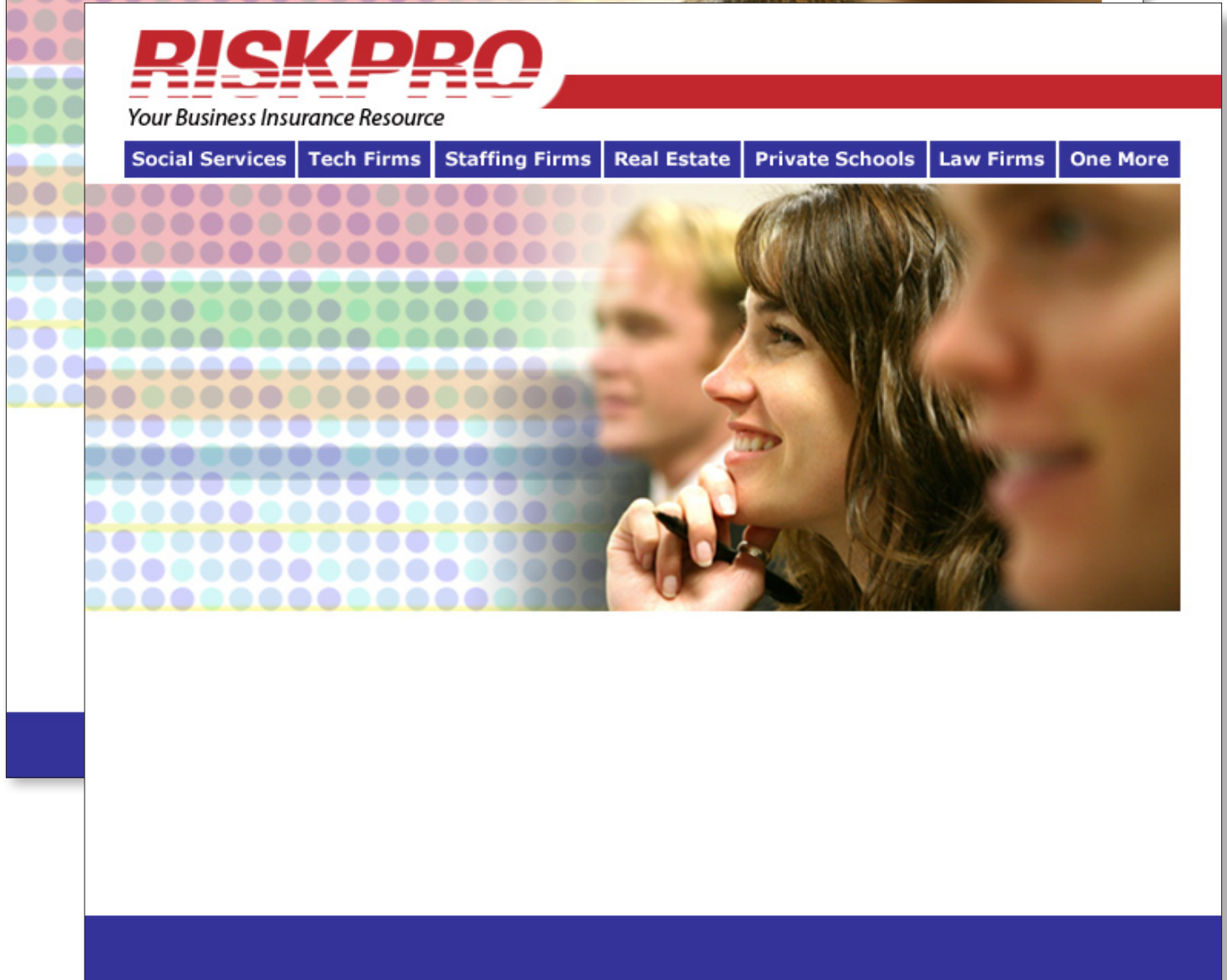
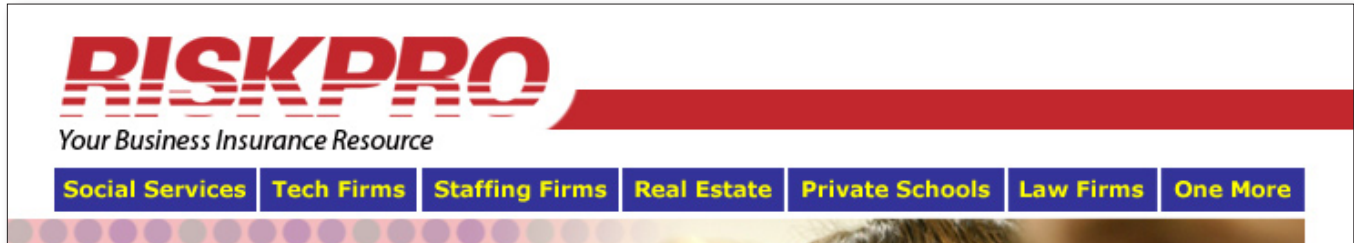
One last type of rollover effect we're going to look at is CSS PopUp Menus. For this one close your current Fireworks file and open *RiskPro-Homepage4.png*. This file is the same state we started our last exercise at, plus I've added the simple rollovers back.

- To get started, click on the slice for Social Services, right-click and select **Add Pop-up Menu...** from the menu
- In this dialog box we're going to create our submenu of selections. Under **Text** type *About The Program*, *Coverage* and *Application* with their respective **Links** shown here.
- Now click on the **Appearance** option at the top of the menu
- Here we can setup how our submenus will look when they drop down:
To coordinate it with our current menus lets set the **Font** to **Size 12 Verdana, Arial, Helvetica, sans-serif**.
Our **Up State Text** to **#FFFFFF** and **Cell** to **#333399**.
Our **Over State Text** to **#FFFF00** and **Cell** to **#000084**.
- The **Advanced** option gives you a lot of control over the popup cells, but for now we're going to go with the defaults (*you can play later!*)
- The **Position** option gives you control over where your popup menu is positioned. We want it to drop below the current menu, so we'll click on the **Bottom Of Slice** button  and click **Done**.
- At this point you can't see what it's going to look like (Fireworks only places a wireframe structure were it's going to be), but we can preview it in a browser by going to **File > Preview In Browser > Preview in Firefox** (your computer may have a different default)
- You can add additional popup menus
- We now have a file ready to export to HTML



After duplicating the Frame you have two identical copies.
Then you can change the text colors on the navigation for your rollover effects.

Rollover Art Frame (modified copy)—On State



Base Art Frame (original copy)—Off State